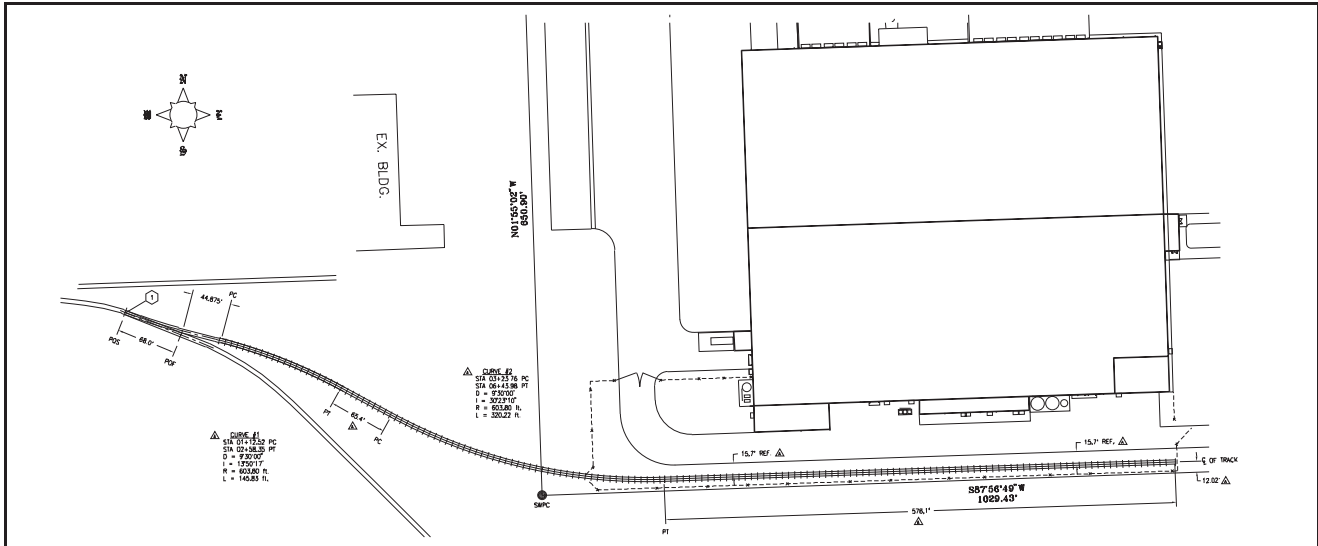
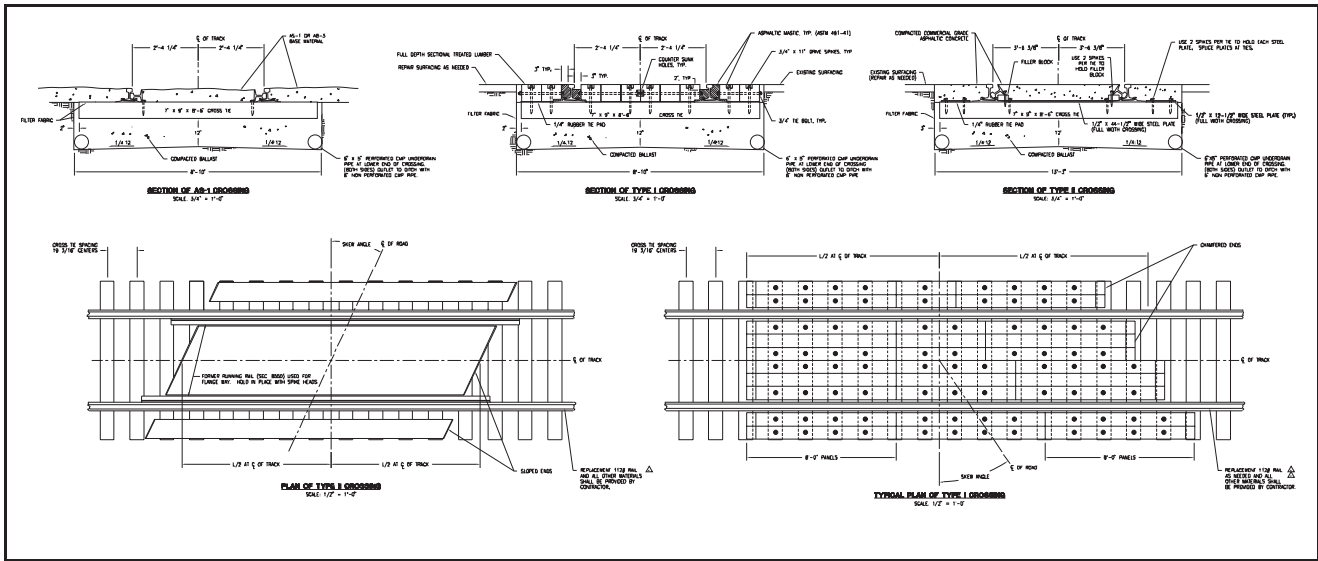


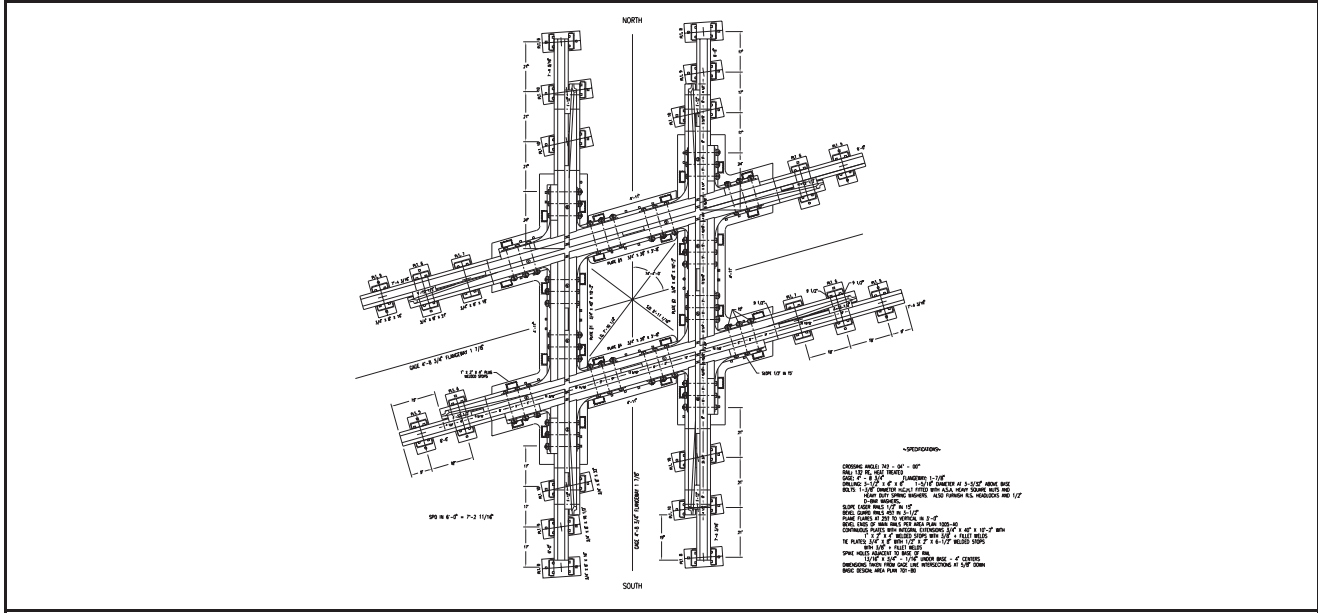
Track siding developed to accommodate the off-loading of heavy power generators bound for a nearby power plant. The original track was removed, redesigned and relocated. A #10 turnout and double switch point derail were incorporated into the design.



This is a bird-eye view of a rail spur servicing a new production/warehouse facility recently constructed in the Kansas City area. Starfire developed the specification document, production drawings package and location drainage information necessary to facilitate the spur's construction.



Upgrade and repair of a short line right-of-way: This project included the inspection of six bridges and recommendations for their repair, the design/recommendations for repair of eight grade crossings as well as the design of a siding track with two #8 turnouts to facilitate equipment directional changes.



Starfire was contracted to design for manufacture various track components from customer specifications, including this new three-rail bolted crossing diamond. Other track components were designed as well, including specialty tie plates, fasteners and other crossing diamonds.