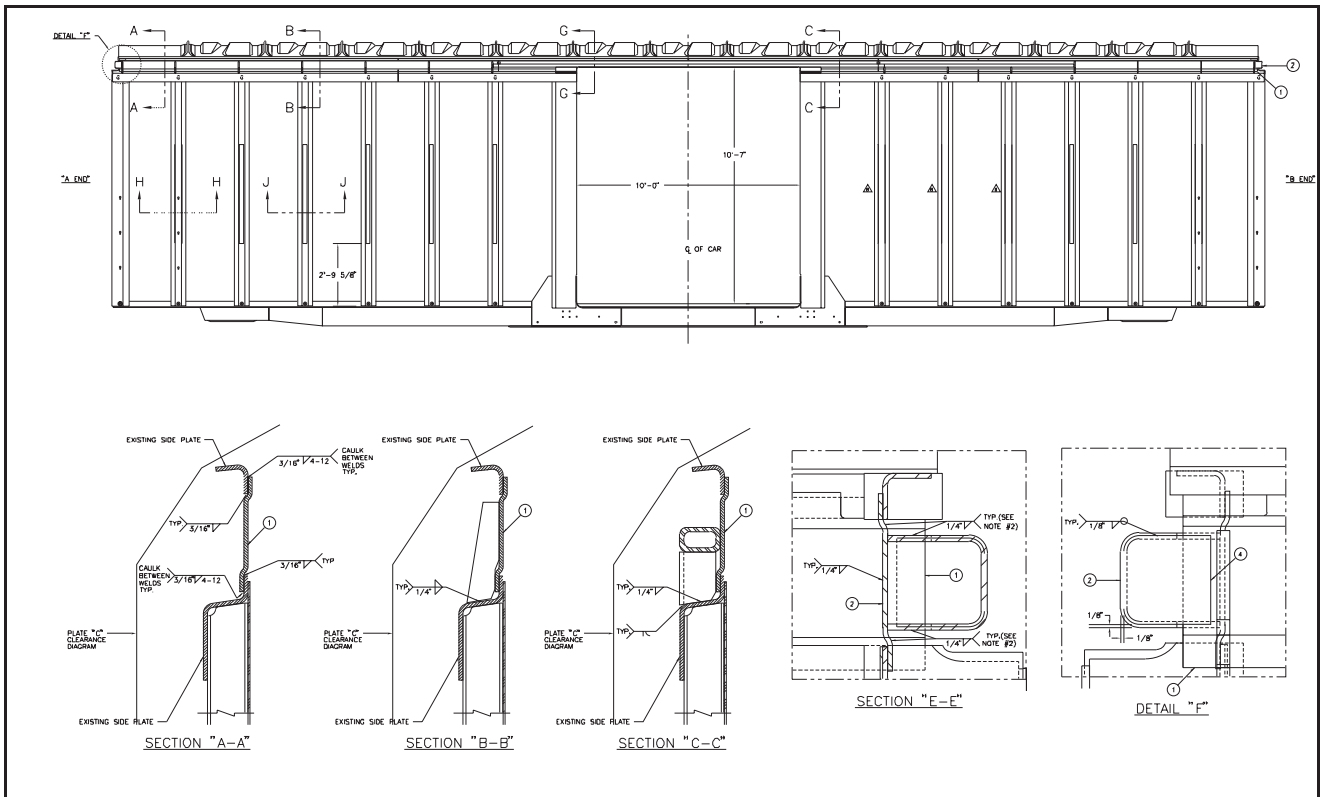


Wall mounted rub-rails and air vents were designed and installed on a number of privately owned boxcars for use in transporting wet palletized pulp paper, allowing the paper to dissipate moisture while protecting the sensitive commodity.



Roof raise of selected series of boxcars to increase the car's interior capacity. The car's capacity was increased from 220,000 lb. GRL to 263,000 lb. GRL. Taller doors were also installed. The underframes were modified to accept larger trucks, consequently the flooring and stringer arrangements were modified for wheel clearance.